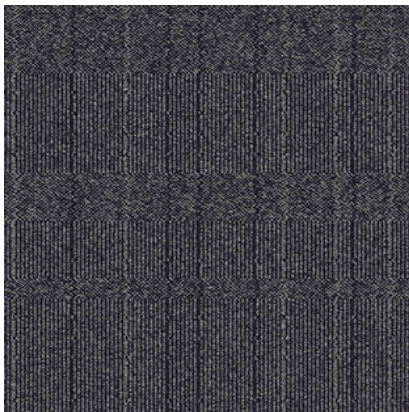


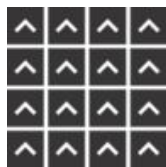
9442-004-000 Steel Grid



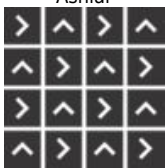
Installation Methods



Ashlar



Monolithic



Quarter Turn

All product specifications reflect averages derived from product sample testing, are subject to normal manufacturing and testing tolerances and inherent pattern variances, and may be changed without notice. For more information about these and other important attributes of the product(s) described herein, including recycled content and product warranty information, please see

www.interface.com.cn/page/disclaimer

Product Old Street **Colour** Steel Grid **Collection** NY+LON Streets

Product Number 9442

Product Specifications

Product Construction Tufted Textured Loop

Yarn System 100% Solution Dyed Nylon

Dye Method 100% Solution Dyed

Soil/Stain Protection Protpekt²®

Preservative Protection Intersept[®]

More Product Specifications

Machine Gauge Tapestry

Stitches 49/10cm 12.4/in

Pile Thickness 2.5mm ±0.5mm

Total Thickness 5.5mm ±0.5mm

Size Description 50*50

Backing Structure GlasBac[®]

Performance Specifications

Area of Use Commercial - Heavy Duty

Stability - Delaminating
 ASTM D3936 ≥ 3.0 lbs/in
 ISO 11857 ≥ 26 N
 GB/T 26843 ≥ 26 N

Stability - Dimensional Stability
 ISO 2551 ≤ 0.1%
 QB/T 2755 ≤ 0.1%

Stability - Tuft Bind
 ASTM D1335 ≥ 8.0 lbs
 ISO 4919 ≥ 30 N
 QB/T 1090 ≥ 24 N (QB/T 2755)

Wear - Castor Chair
 ISO 4918 ≥ 2.4
 QB/T 2755 ≤ 0.15%

Wear - Vetterman Drum
 ASTM D5252 ≥ 3.0 at 12000 cycles
 ISO 10361 ≥ 3.0 at 22000 cycles
 GB/T 26844 ≥ 3.0 at 22000 cycles

Colour Fastness to Light
 AATCC 16E ≥ 4 at 60 AFU's
 ISO 105-B02 ≥ 4-5
 GB/T 8427 ≥ 4-5

Colour Fastness to Rubbing and Crocking
 AATCC 165 ≥ 4
 ISO 105-X12 ≥ 4-5
 GB/T 3920 ≥ 4-5

Colour Fastness to Water
 AATCC 107 ≥ 4
 ISO 105-E01 ≥ 4-5
 GB/T 5713 ≥ 4-5

Flammability - Methanamide Pill
 Pass DOC FF 1-70 or ASTM D2859 Test
 ISO 6925 ≤ 25.4 mm
 GB/T 11049 ≤ 25.4 mm

| | |
|------------------------------|---|
| Flammability - Radiant Panel | ASTM E648 Class 1 ISO 9239-1 B1 CHF \geq 4.5 kW/m ² (GB 8624) GB/T 11785 B1 CHF \geq 4.5 kW/m ² (GB 8624) |
| Flammability - Smoke Density | ASTM E662 < 450 ISO 9239-1 \leq 750 %.min (GB 8624) GB/T 11785 s1 \leq 750 %.min (GB 8624) |
| Antistatic | AATCC 134 < 3.0 kV ISO 6356 \leq 2.0 kV GB/T 18044 \leq 2.0 kV |
| Lifetime Antimicrobial | AATCC 174 Parts II & III 99% reduction/No mold 7 Days ASTM E2471 Complete Inhibition |

Generic Tests

| | |
|--------------------|---|
| Acoustic - Nylon | Absorption Coefficient - NRC 0.0 - 0.2 |
| Dynamic Loading | ISO 2094 < 15% Thickness loss QB/T 1091 < 15% Thickness loss |
| Static Loading | ISO 3415 < 15% Thickness loss QB/T 1092 < 15% Thickness loss |
| Green Carpet (VOC) | ASTM D5116 Accredited ISO 10580 Accredited |
| Thermal Resistance | ASTM C518 R Value 0.5 |

Environmental Specifications

| | |
|------------------------------------|---|
| Recycled Content % | 59% |
| Pre-Consumer (Total) | 57% |
| Post-Consumer (Total) | 2% |
| Indoor Air Quality | Green Label Plus ASTM D5116 # GLP1354 UL GREENGUARD Gold UL 2818 # 71238-420 |
| NSF Sustainable Carpet | NSF/ANSI 140 Gold Sustainable Carpet Assessment Standard |
| Ingredients and Life Cycle Impacts | Environmental Product Declaration - GlasBac® |
| End of Life | Carpet to Carpet Recycling |
| Embodied Carbon (Cradle to Gate) | 5.67 kg CO ₂ eq./m ² |

Technical Information

| | |
|------------------------|---|
| Installation | View recommended Interface Installation Guidelines online |
| Maintenance | View recommended Interface Maintenance Guidelines online |
| Reclamation | View details on our ReEntry™ Program |
| Warranty | 15 Year Standard Warranty |
| Manufacturing Location | ISO9001&14001&45001 Certified Plant in Taicang, China |