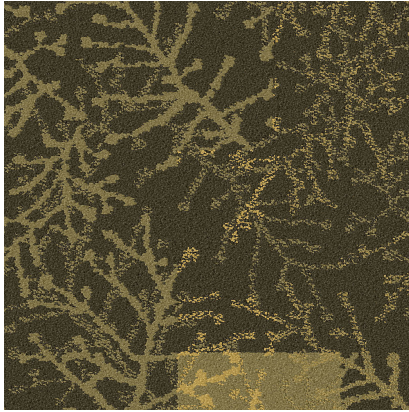
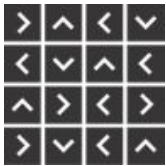


## 7256-008-000 Earth M0865



### Installation Methods



Non Directional

All product specifications reflect averages derived from product sample testing, are subject to normal manufacturing and testing tolerances and inherent pattern variances, and may be changed without notice. For more information about these and other important attributes of the product(s) described herein, including recycled content and product warranty information, please see [www.interface.com.cn/page/disclaimer](http://www.interface.com.cn/page/disclaimer)

### Product Head Over Heels Colour Earth M0865 Collection

Product Number 7256

### Product Specifications

Product Construction	Tufted Textured Tip Sheared Loop
Yarn System	100% Recycled Solution Dyed Nylon
Dye Method	100% Solution Dyed
Soil/Stain Protection	Protekt <sup>2</sup> ®
Preservative Protection	Intersept <sup>®</sup>

### More Product Specifications

Machine Gauge	Tapestry
Stitches	29/10cm 7.4/in
Pile Thickness	3.0mm ±0.5mm
Total Thickness	7.0mm ±0.5mm
Size Description	100*100
Backing Structure	GlasBac <sup>®</sup>

### Performance Specifications

Area of Use	Commercial - Heavy Use
Stability - Delaminating	AS/NZS 2111.16 ≥ 50 Newtons ASTM D3936 ≥ 2.5lbs/in
Stability - Dimensional Stability	ISO/PAS 17984 ≤ 0.2% ISO/PAS 17984 < 0.2%
Stability - Tuft Bind	ASTM D1335 ≥ 8.0 lbs AS/NZS 2111.15 >30 Newtons
Wear - Castor Chair	BS-EN 985 r ≥ 2.4
Wear - Vetterman Drum	TWC-TM247 / TWC-TM251 / TWC-TM284 Colour: ≥3 & Structure: ≥3,BS ISO 10361 Overall Change ≥3.5 (Heavy Contract)
Colour Fastness to Light	AS2001 1.4.21 ≥ 4 AATCC 16E ≥ 4
Colour Fastness to Rubbing and Crocking	AATCC 165 ≥ 4 AS/NZS2111.19.1 ≥ 4
Colour Fastness to Water	AATCC 107 ≥ 4 AS2001.4.21 ≥ 4
Flammability - Radiant Panel	ASTM E648 Class 1 ISO 9239-1 B1
Flammability - Smoke Density	ASTM E662 Density ≤ 450 ISO 9239-1 Density < 750 %/min

Antistatic	AATCC 134 < 3000 Volts BS ISO 6356 ≤ 2.0Kv
Lifetime Antimicrobial	AATCC 171 Washed ASTME-2471 Complete Inhibition AATCC174 Parts 2 & 3 99% reduction. No mold 7 Days

### Generic Tests

Acoustic - Nylon	Absorption Coefficient - NRC ≥ 0.10
Dynamic Loading	AS/NZS 2111.2 < 12.5% loss
Static Loading	AS/NZS2111.13 < 6% Loss ISO 015/3415 Thickness after 60 mins recovery >85%
Green Carpet (VOC)	ASTM D5116 Accredited ISO 10580 Accredited
Thermal Resistance	ASTM C518 R Value ≥ 0.5

### Environmental Specifications

Recycled Content %	65%
Pre-Consumer (Total)	53%
Post-Consumer (Total)	12%
Indoor Air Quality	Green Label Plus ASTM D5116 # GLP1354 UL GREENGUARD Gold UL 2818 # 71238-420
NSF Sustainable Carpet	NSF/ANSI 140 Gold Sustainable Carpet Assessment Standard
Ingredients and Life Cycle Impacts	<a href="#">Environmental Product Declaration - GlasBac®</a>
End of Life	Carpet to Carpet Recycling
Embodied Carbon (Cradle to Gate)	6.44 kg CO <sub>2</sub> eq./m <sup>2</sup>

### Technical Information

Installation	<a href="#">View recommended Interface Installation Guidelines online</a>
Maintenance	<a href="#">View recommended Interface Maintenance Guidelines online</a>
Reclamation	View details on our ReEntry™ Program
Warranty	<a href="#">15 Year Standard Warranty</a>
Manufacturing Location	<a href="#">ISO9001&amp;14001&amp;45001 Certified Plant in Taicang, China</a>