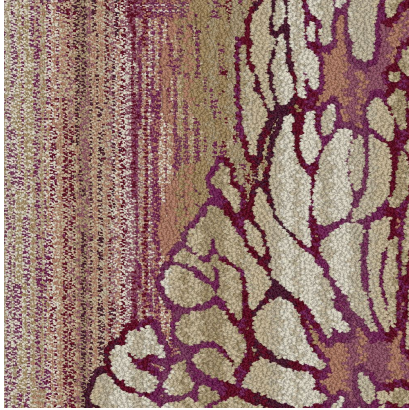


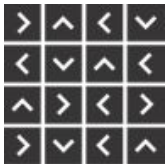
# Over The Edge Edgy

# Interface®

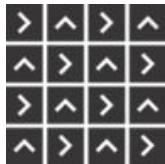
## 7194-004-000 Fuchsia



### Installation Methods



Non Directional



Quarter Turn

All product specifications reflect averages derived from product sample testing, are subject to normal manufacturing and testing tolerances and inherent pattern variances, and may be changed without notice. For more information about these and other important attributes of the product(s) described herein, including recycled content and product warranty information, please see

[www.interface.com.cn/page/disclaimer](http://www.interface.com.cn/page/disclaimer)

**Product** Over The Edge Edgy **Colour** Fuchsia **Collection** Over the Edge

Product Number 7194

### Product Specifications

Product Construction Tufted Textured Loop

Yarn System 100% Recycled Solution Dyed Nylon

Dye Method 100% Solution Dyed

Soil/Stain Protection Protakt<sup>®</sup>

Preservative Protection Intersept<sup>®</sup>

### More Product Specifications

Machine Gauge 10th Gauge

Stitches 30/10cm 7.6/in

Pile Thickness 5.5mm ±0.5mm

Total Thickness 9.0mm ±0.5mm

Size Description 50\*50

Backing Structure GlasBac<sup>®</sup> RE

### Performance Specifications

Area of Use Commercial - General Use

Stability - Delaminating AS/NZS 2111.16 ≥ 50 Newtons  
ASTM D3936 ≥ 2.5lbs/in

Stability - Dimensional Stability ISO/PAS 17984 ≤ 0.2%  
ISO/PAS 17984 < 0.2%

Stability - Tuft Bind ASTM D1335 ≥ 8.0 lbs  
AS/NZS 2111.15 >30 Newtons

Wear - Castor Chair BS-EN 985 r ≥ 2.4

Wear - Vetterman Drum TWC-TM247 / TWC-TM251 / TWC-TM284 Colour:  
≥3 & Structure: ≥3,BS ISO 10361 Overall Change  
≥3.0 (Heavy Contract)

Colour Fastness to Light AS2001 1.4.21 ≥ 4  
AATCC 16E ≥ 4

Colour Fastness to Rubbing and Crocking AATCC 165 ≥ 4  
AS/NZS2111.19.1 ≥ 4

Colour Fastness to Water AATCC 107 ≥ 4  
AS2001.4.21 ≥ 4

Flammability - Radiant Panel ASTM E648 Class 1  
ISO 9239-1 B1

Flammability - Smoke Density ASTM E662 Density ≤ 450  
ISO 9239-1 Density < 750 %/min

Antistatic	AATCC 134 < 3000 Volts BS ISO 6356 ≤ 2.0Kv
Lifetime Antimicrobial	AATCC 171 Washed ASTME-2471 Complete Inhibition AATCC174 Parts 2 & 3 99% reduction. No mold 7 Days

### Generic Tests

Acoustic - Nylon	Absorption Coefficient - NRC ≥ 0.10
Dynamic Loading	AS/NZS 2111.2 < 12.5% loss
Static Loading	AS/NZS2111.13 < 6% Loss ISO 015/3415 Thickness after 60 mins recovery >85%
Green Carpet (VOC)	ASTM D5116 Accredited ISO 10580 Accredited
Thermal Resistance	ASTM C518 R Value ≥ 0.5

### Environmental Specifications

Recycled Content %	75%
Pre-Consumer (Total)	51%
Post-Consumer (Total)	24%
Indoor Air Quality	Green Label Plus ASTM D5116 # GLP1354 UL GREENGUARD Gold UL 2818 # 71238-420
NSF Sustainable Carpet	NSF/ANSI 140 Gold Sustainable Carpet Assessment Standard
Ingredients and Life Cycle Impacts	<a href="#">Environmental Product Declaration - GlasBac®RE</a>
End of Life	Carpet to Carpet Recycling
Embodied Carbon (Cradle to Gate)	6.75 kg CO <sub>2</sub> eq./m <sup>2</sup>

### Technical Information

Installation	<a href="#">View recommended Interface Installation Guidelines online</a>
Maintenance	<a href="#">View recommended Interface Maintenance Guidelines online</a>
Reclamation	View details on our ReEntry™ Program
Warranty	<a href="#">15 Year Standard Warranty</a>
Manufacturing Location	<a href="#">ISO9001&amp;14001&amp;45001 Certified Plant in Taicang, China</a>