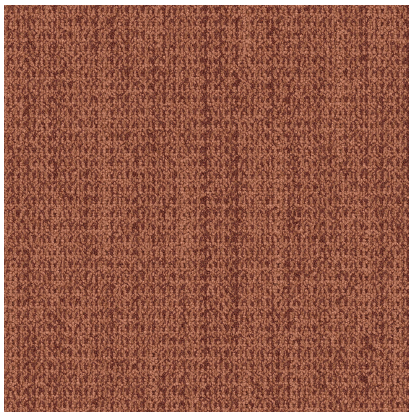


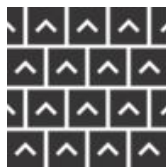
## 4306-009-000 Terracotta



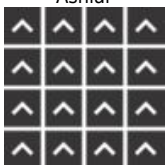
### Installation Methods



Ashlar



Brick



Monolithic

All product specifications reflect averages derived from product sample testing, are subject to normal manufacturing and testing tolerances and inherent pattern variances, and may be changed without notice. For more information about these and other important attributes of the product(s) described herein, including recycled content and product warranty information, please see

[www.interface.com.cn/page/disclaimer](http://www.interface.com.cn/page/disclaimer)

**Product** WG100 **Colour** Terracotta **Collection** Woven Gradience

Product Number 4306

### Product Specifications

Product Construction Tufted Textured Loop

Yarn System 100% Recycled Solution Dyed Nylon

Dye Method 100% Solution Dyed

Soil/Stain Protection Protpekt<sup>®</sup>

Preservative Protection Intersept<sup>®</sup>

### More Product Specifications

Machine Gauge 12th Gauge

Stitches 39/10cm 9.91/in

Pile Thickness 2.4mm ±0.5mm

Total Thickness 6.8mm ±0.5mm

Size Description 50\*50

Backing Structure GlasBac<sup>®</sup>

### Performance Specifications

Area of Use Commercial - Heavy Use

Stability - Delaminating ASTM D3936 ≥ 3.0 lbs/in  
GB/T 26843 ≥ 26 N

Stability - Dimensional Stability QB/T 2755 ≤ 0.1%  
ISO 2551 ≤ ± 0.1%

Stability - Tuft Bind QB/T 1090 ≥ 24 N (QB/T 2755)  
ISO 4919 > 30 N

Wear - Castor Chair QB/T 2755 ≤ 0.15%  
EN 985 > 2.4 Rating @25,000 cycles

Wear - Vetterman Drum GB/T 26844 ≥ 3.0 at 22000 cycles  
ISO 10361(ASTM D5417) ≥ 3.5 Rating @20,000 cycles

Colour Fastness to Light GB/T 8427 ≥ 4-5  
AATCC 16 Part 3 ≥ 4 @ 60 Hours

Colour Fastness to Rubbing and Crocking GB/T 3920 ≥ 4-5  
AATCC 165 ≥ 4 (Wet & Dry)

Colour Fastness to Water AATCC 107 ≥ 4  
GB/T 5713 ≥ 4-5

Flammability - Methanamide Pill GB/T 11049 ≤ 25.4 mm  
ASTM 2859 - 7 of 8 passing

Flammability - Radiant Panel GB/T 11785 B1 CHF ≥ 4.5 kW/m<sup>2</sup> (GB 8624)  
ASTM E648 > .45 watts/sq. cm

Flammability - Smoke Density ASTM E662 < 450  
GB/T 11785 s1 ≤ 750 %.min (GB 8624)

Antistatic	AATCC 134 < 3.0 kV GB/T 18044 ≤ 2.0 kV
Lifetime Antimicrobial	AATCC 174 Parts II & III 99% reduction/No mold 7 Days ASTM E2471 Complete Inhibition

### Generic Tests

Acoustic - Nylon	Absorption Coefficient - NRC 0.0 - 0.2
Dynamic Loading	ISO 2094 < 15% Thickness loss QB/T 1091 < 15% Thickness loss
Static Loading	ISO 3415 < 15% Thickness loss QB/T 1092 < 15% Thickness loss
Green Carpet (VOC)	ASTM D5116 Accredited ISO 10580 Accredited
Thermal Resistance	ASTM C518 R Value ≥ 0.5

### Environmental Specifications

Recycled Content %	64%
Pre-Consumer (Total)	53%
Post-Consumer (Total)	11%
Indoor Air Quality	Green Label Plus ASTM D5116 # GLP1354 UL GREENGUARD Gold UL 2818 # 71238-420
NSF Sustainable Carpet	NSF/ANSI 140 Gold Sustainable Carpet Assessment Standard
Ingredients and Life Cycle Impacts	<a href="#">Environmental Product Declaration - GlasBac®</a>
End of Life	Carpet to Carpet Recycling
Embodied Carbon (Cradle to Gate)	6.31 kg CO <sub>2</sub> eq./m <sup>2</sup>

### Technical Information

Installation	<a href="#">View recommended Interface Installation Guidelines online</a>
Maintenance	<a href="#">View recommended Interface Maintenance Guidelines online</a>
Reclamation	View details on our ReEntry™ Program
Warranty	<a href="#">15 Year Standard Warranty</a>
Manufacturing Location	<a href="#">ISO9001&amp;14001&amp;45001 Certified Plant in Taicang, China</a>