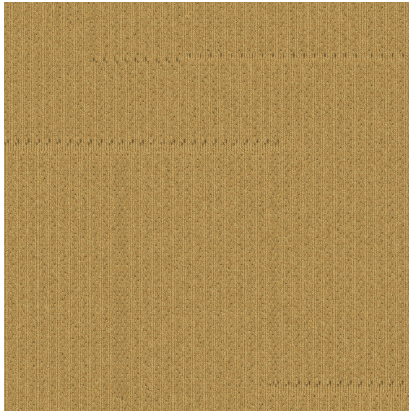
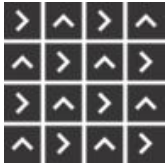


## 1680-030-000 Sunflower



### Installation Methods



Quarter Turn

All product specifications reflect averages derived from product sample testing, are subject to normal manufacturing and testing tolerances and inherent pattern variances, and may be changed without notice. For more information about these and other important attributes of the product(s) described herein, including recycled content and product warranty information, please see [www.interface.com.cn/page/disclaimer](http://www.interface.com.cn/page/disclaimer)

**Product** Colour Me 16oz **Colour** Sunflower **Collection** Colour Me

Product Number 1680

### Product Specifications

Product Construction Tufted Textured Tip Sheared Loop

Yarn System 100% Recycled Solution Dyed Nylon

Dye Method 100% Solution Dyed

Soil/Stain Protection Protpekt<sup>2</sup>

Preservative Protection Intersept<sup>®</sup>

### More Product Specifications

Machine Gauge 12th Gauge

Stitches 41/10cm 10.4 /in

Pile Thickness 2.5mm ±0.5 mm

Total Thickness 6.0 mm ±0.5 mm

Backing Structure GlasBac<sup>®</sup>

### Performance Specifications

Area of Use Commercial - Heavy Duty

Stability - Delaminating  
ASTM D3936 ≥ 3.0 lbs/in  
ISO 11857 ≥ 26 N  
GB/T 26843 ≥ 26 N

Stability - Dimensional Stability  
ISO 2551 ≤ 0.1%  
QB/T 2755 ≤ 0.1%

Stability - Tuft Bind  
ASTM D1335 ≥ 8.0 lbs  
ISO 4919 ≥ 30 N  
QB/T 1090 ≥ 24 N (QB/T 2755)

Wear - Castor Chair  
ISO 4918 ≥ 2.4  
QB/T 2755 ≤ 0.15%

Wear - Vetterman Drum  
ASTM D5252 ≥ 3.0 at 12000 cycles  
ISO 10361 ≥ 3.0 at 22000 cycles  
GB/T 26844 ≥ 3.0 at 22000 cycles

Colour Fastness to Light  
AATCC 16E ≥ 4 at 60 AFU's  
ISO 105-B02 ≥ 4-5  
GB/T 8427 ≥ 4-5

Colour Fastness to Rubbing and Crocking  
AATCC 165 ≥ 4  
ISO 105-X12 ≥ 4-5  
GB/T 3920 ≥ 4-5

Colour Fastness to Water  
AATCC 107 ≥ 4  
ISO 105-E01 ≥ 4-5  
GB/T 5713 ≥ 4-5

Flammability - Methanamide Pill  
Pass DOC FF 1-70 or ASTM D2859 Test  
ISO 6925 ≤ 25.4 mm  
GB/T 11049 ≤ 25.4 mm

Flammability - Radiant Panel	ASTM E648 Class 1 ISO 9239-1 B1 CHF $\geq$ 4.5 kW/m <sup>2</sup> (GB 8624) GB/T 11785 B1 CHF $\geq$ 4.5 kW/m <sup>2</sup> (GB 8624)
Flammability - Smoke Density	ASTM E662 < 450 ISO 9239-1 $\leq$ 750 %.min (GB 8624) GB/T 11785 s1 $\leq$ 750 %.min (GB 8624)
Antistatic	AATCC 134 < 3.0 kV ISO 6356 $\leq$ 2.0 kV GB/T 18044 $\leq$ 2.0 kV
Lifetime Antimicrobial	AATCC 174 Parts II & III 99% reduction/No mold 7 Days ASTM E2471 Complete Inhibition

### Generic Tests

Acoustic - Nylon	Absorption Coefficient - NRC 0.0 - 0.2
Dynamic Loading	ISO 2094 < 15% Thickness loss QB/T 1091 < 15% Thickness loss
Static Loading	ISO 3415 < 15% Thickness loss QB/T 1092 < 15% Thickness loss
Green Carpet (VOC)	ASTM D5116 Accredited ISO 10580 Accredited
Thermal Resistance	ASTM C518 R Value 0.5

### Environmental Specifications

Recycled Content %	63%
Pre-Consumer (Total)	54%
Post-Consumer (Total)	10%
Indoor Air Quality	Green Label Plus ASTM D5116 # GLP1354 UL GREENGUARD Gold UL 2818 # 71238-420
NSF Sustainable Carpet	NSF/ANSI 140 Gold Sustainable Carpet Assessment Standard
Ingredients and Life Cycle Impacts	<a href="#">Environmental Product Declaration - GlasBac®</a>
End of Life	Carpet to Carpet Recycling
Embodied Carbon (Cradle to Gate)	5.41 kg CO <sub>2</sub> eq./m <sup>2</sup>

### Technical Information

Installation	<a href="#">View recommended Interface Installation Guidelines online</a>
Maintenance	<a href="#">View recommended Interface Maintenance Guidelines online</a>
Reclamation	View details on our ReEntry™ Program
Warranty	<a href="#">15 Year Standard Warranty</a>
Manufacturing Location	<a href="#">ISO9001&amp;14001&amp;45001 Certified Plant in Taicang, China</a>