

英特飞做出了零号任务承诺，即在2020年之前，彻底消除对环境造成的任何负面影响，为了兑现这个承诺，我们一直都在思索每一个创意、生产和建筑决策对环境的影响。这本样本簿采用可再生纸张和大豆油墨印制而成。我们每印制5000本样本簿需使用1725kg的再生纸，从而可以拯救24棵原生树。能源密度有所降低，且温室气体也得以减少。此外，废水和固体废物等也有所减少。通过样本回收计划，我们可以重新使用样本，从而避免对样本材料进行填埋，并最终回收利用这些样本材料。

As part of Interface's Mission Zero promise to eliminate any negative impact on the environment by 2020, we always consider the environment impact of every creative, manufacturing and building decision. This sample book is printed on recycled paper and with soy based ink. Twenty four virgin trees were saved from our use of 1725kg of recycled paper in the production of 5000 sample books. Energy intensity also decreased and greenhouse gases were reduced. The other reductions came from waste water and solid waste. Through our sample reclamation program, we help keep sample materials out of landfill by re-using them until it is time to recycle these sample materials.

www.interface.com.cn

上海工作室 / Shanghai Studio

英特飞中国 / Interface China
tel: 86-21-6340 3868
www.interface.com.cn

香港工作室 / Hongkong Studio

英特飞中国 / Interface China
tel: 852-2802 0838
www.interface.com.cn

北京工作室 / Beijing Studio

英特飞中国 / Interface China
tel: 86-10-6590 7810
www.interface.com.cn

太仓生产基地 / Taicang Plant

英特飞中国 / Interface China
tel: 86-512- 5373 9888
www.interface.com.cn

广州工作室 / Guangzhou Studio

英特飞中国 / Interface China
tel: 86-20-3869 2887
www.interface.com.cn

东南亚 / South East Asia

英特飞亚洲 / Interface Asia
tel: 65-6478 1510
www.interface.com

韩国 / South Korea

tel: 82-2-555 1734
www.interface.com

日本 / Japan

英特飞日本 / Interface Japan
tel: 81-3-5733 5211
www.interface.com

澳大利亚 / Australia

英特飞澳大利亚 / Interface Australia
local toll free: 1800 008 101
www.interface.com.au

04/2017
SF0088T0

(IFSCN-201704)



Mission Zero:
our promise to eliminate any
negative impact our company
may have on the environment
by the year 2020.

Aerial Planks

Interface[®]

Aerial™ Planks

Aerial 地毯 AE311 | AE313

从高处俯瞰城市，我们能够得到一个绝佳机会见证连接性，链接网既让我们着迷又令我们安心。Aerial系列产品的每一种配色都采用几种色调混合而成，从而使朴素的中性色调能够幻化出各种新图案，并将这种灵感带到我们的生活当中。

Aerial地毯系列包括一种复杂精细的基本图案和一种颜色柔和却又不失特色的可选图案。Aerial AE311™基本款式采用自然变化的笔触绘制图案，而Aerial AE313™则采用了不易察觉的洗色法，在这一中性基础之上完成图案绘制。两者完美配合，实现了颜色和图案从一个空间到另一个空间的无缝过渡。

我们50cm x 50cm正方形版本的Aerial图案在Aerial AE310™的基础上进一步扩展，从而增添了一层设计。Aerial款式采用多层面设计和互搭色调，从而可创造出有待我们去发现的各种设计可能性！

Aerial Planks AE311 | AE313

A view of the city from above gives us the unique opportunity to witness connectivity; a web of links that both fascinates and assures us. In Aerial, a simple neutral palette travels new paths when several hues tangle together in each colourway, bringing this inspiration to life.

The Aerial Planks series comprise an intricate base pattern, and a muted accent option. The base style, Aerial AE311™ features organic brush stroke patterns while its partner Aerial AE313™ introduces a subtle wash of colour to this neutral foundation. These two work beautifully hand-in-hand to provide a fluid flow of colour and pattern from one space to the next.

Expand further with Aerial AE310™, our 50cm x 50cm square version of the Aerial pattern, for an added layer of design. With its multi-faceted design and coordinated palette, the styles of Aerial create a network of design possibilities that is simply waiting to be discovered!





AE311 色系 / Colourline



7922-001-000 Mist



7922-002-000 Fog



7922-003-000 Taupe



7922-004-000 Chestnut



7922-005-000 Greige



7922-006-000 Iron



7922-007-000 Smoke



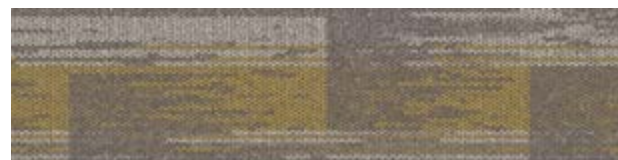
7922-008-000 Ink



AE313色系 / Colourline



8187-001-000 Mist/Aloe



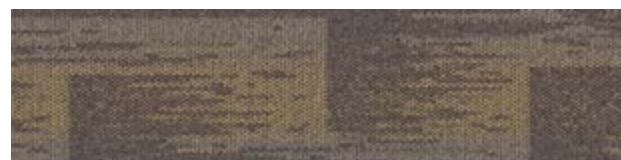
8187-002-000 Fog/Citrus



8187-003-000 Taupe/Flannel



8187-004-000 Chestnut/Navy



8187-005-000 Greige/Honey



8187-006-000 Iron/Prairie



8187-007-000 Smoke/Apple

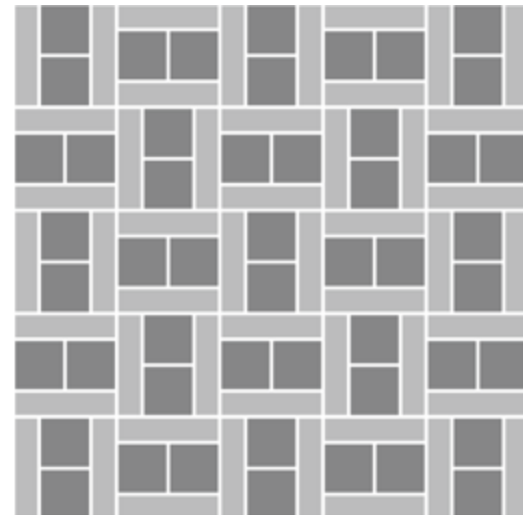


8187-008-000 Ink/Olive



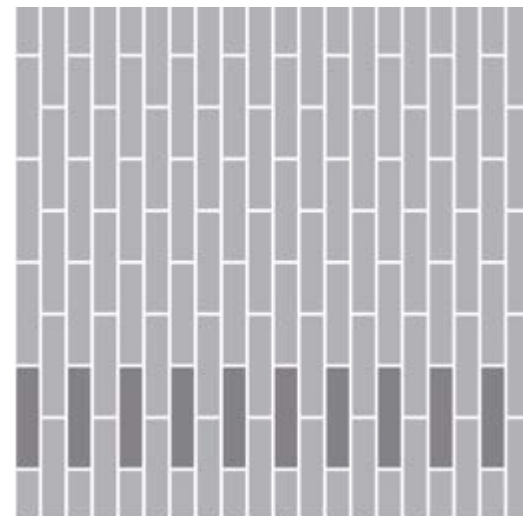
设计方案 以下为建议铺装方式

Design Ideas Below are floor layouts showing how to create the design ideas shared in several of the images featured in this brochure.



产品 / Product AE313 颜色 / Colour Taupe/Flannel

产品 / Product AE310 颜色 / Colour Smoke 安装 / Installed 设计铺装 / Pattern By Tile



产品 / Product AE313 颜色 / Colours Mist/Aloe, Iron/Prairie 安装 / Installed 设计铺装 / Pattern By Tile

技术参数 / Specifications

AE311™ i2

产品型号 7922 图案号 000
 产品定义 全圈绒
 纱线/纤维 BCF尼龙6 – 100%环保尼龙
 染色方式 100% 原液染色
 簇绒机器规格 1/12
 毯毛厚度 2.5毫米 +/- 0.5毫米
 总厚度 6.5毫米 +/- 0.5毫米
 地毯尺寸 25厘米 x 100厘米
 建议使用区域 商业重污染
 抑菌类型 Intersept®
 抗污类型 Protekt 2®
 底背类型 GlasBac® 65%-70%可回收成分
 GlasBac® RE 80%-85%可回收成分

建议安装方式



上下错半 Ashlar 人字形 Herringbone

Style Code	7922 Pattern 000
Product Definition	Tufted Textured Loop
Yarn/Fibre	BCF Nylon Type 6 – 100% Recycled Content
Colour System	100% Solution Dyed
Machine Gauge	1/12
Pile Thickness	2.5mm +/- 0.5mm
Total Thickness	6.5mm +/- 0.5mm
Tile Size	25cm x 100cm
Area of Use	Commercial – Heavy Use
Lifetime Antimicrobial	Intersept®
Soil/Stain Protection	Protekt 2®
Total Recycled Content	GlasBac® 65% to 70% Total Recycled Content GlasBac® RE 80% to 85% Total Recycled Content
Installation Methods	Ashlar, Herringbone

AE313™ i2

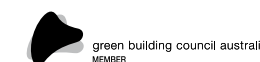
产品型号 8187 图案号 000
 产品定义 全圈绒
 纱线/纤维 BCF尼龙6 – 100%环保尼龙
 染色方式 100% 原液染色
 簇绒机器规格 1/12
 毯毛厚度 2.5毫米 +/- 0.5毫米
 总厚度 6.5毫米 +/- 0.5毫米
 地毯尺寸 25厘米 x 100厘米
 建议使用区域 商业重污染
 抑菌类型 Intersept®
 抗污类型 Protekt 2®
 底背类型 GlasBac® 65%-70%可回收成分
 GlasBac® RE 80%-85%可回收成分

建议安装方式



上下错半 Ashlar 人字形 Herringbone

Style Code	8187 Pattern 000
Product Definition	Tufted Textured Loop
Yarn/Fibre	BCF Nylon Type 6 – 100% Recycled Content
Colour System	100% Solution Dyed
Machine Gauge	1/12
Pile Thickness	2.5mm +/- 0.5mm
Total Thickness	6.5mm +/- 0.5mm
Tile Size	25cm x 100cm
Area of Use	Commercial – Heavy Use
Lifetime Antimicrobial	Intersept®
Soil/Stain Protection	Protekt 2®
Total Recycled Content	GlasBac® 65% to 70% Total Recycled Content GlasBac® RE 80% to 85% Total Recycled Content
Installation Methods	Ashlar, Herringbone



FM 584374

EMS 584375