



ChromaFlex Collection

Interface®



晕染
splash

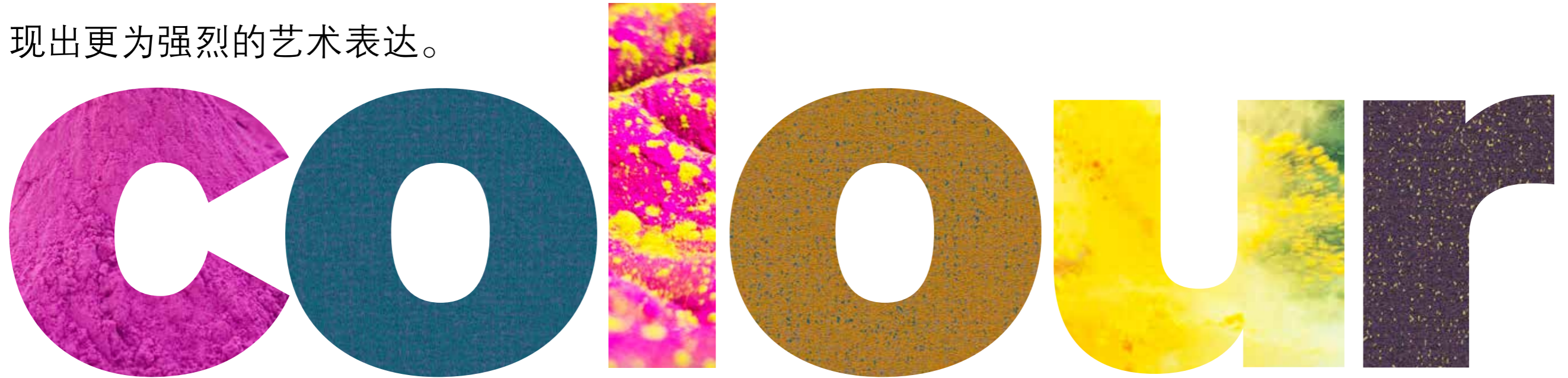


点翠
sprinkle



泼洒
spray

从传统到当代，艺术家受到了创作天性的启发，探索各种色彩的情感语言，呈现出更为强烈的艺术表达。



Inspired by the experimental nature of artists, from traditional to contemporary, who explore the emotional language of to encourage greater artistic expression.

ChromaFlex™

柔和的渐变色调交织在强烈、有力的样式中，通过纹理、颜料和形式的改变形成动态对比。利用色彩丰富的颜色展现大胆的轮廓和自由流动的有机风格。

该系列产品的灵感源自体验式的艺术触感，纵横传统与当代艺术，使用各种色彩描绘情感，呈现出更为强烈的艺术感。

选择ChromaFlex是一个很好的机会，利用丰富的颜色，深入研究光与影、色调与纹理、色彩和情感之间的关系。

充分利用色彩的多样性，通过3种颜色选择创造出互补的模块体系，有机融合Base、Dots 1 和Dots 2的优势。

ChromaFlex系列产品与英特飞所有其他产品一样，均实现了100%碳中和。充分运用设计的优势，走向低碳环保的未来。

Soft graduating tones weave their way through strong, robust forms, creating a dynamic contrast between textures, pigments and forms. A colourful celebration of bold profiles and free-flowing organic styles.

A collection inspired by the experimental nature of artists, from traditional to contemporary, who explore the emotional language of colour to encourage greater artistic expression.

ChromaFlex is an opportunity to use a rich colour palette to study the relationship between light and shade, texture and tone, colour and emotion.

An opportunity to be more playful with colour, a modular system with 3 design options that work together from Base to Dots 1 to Dots 2.

Like all Interface products, the ChromaFlex collection is 100% carbon neutral. Leveraging the power of design to help encourage a low carbon future.



方形地毯 / Carpet Tile ChromaBase
颜色 / Colour Black, Blue Nights, Blueprint, Newport, Dragon Fly, Plum, Cherry, Cajun, Fire Engine, Spice, Gold, Citron, Lime
安装 / Installed 设计铺装 / Design By Tile

ChromaFlex突破传统，通过长条和方形的样式体现出动态系列产品的优势。该产品系列可以与英特飞的任何产品组合使用，让您在现有的理念中体味新生，利用各种色彩揭示建筑背后的故事，不但新奇，而且发人深省。

ChromaFlex is breaking new ground, a dynamic collection available in both planks and squares. A system designed to work with our entire range, enabling you to breathe new life into existing concepts and use bursts of colour to tell the hidden story of architecture in new and inspiring ways.



Base

ChromaBase 的特点, 以24色块凸显明亮中性色调, 让空间更清晰。

ChromaBase features 24 block colours, in bright and neutral tones, to help articulate the space.



方形地毯 / **Carpet Tile** ChromaBase 颜色 / **Colour** Bone, Driftwood 安装 / **Installed** 设计铺装 / Design By Tile
方形地毯 / **Carpet Tile** ChromaBase 颜色 / **Colour** Parchment 安装 / **Installed** 左右错半 / Ashlar

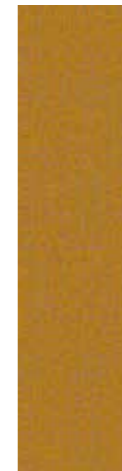
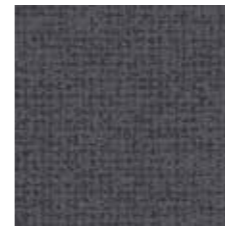


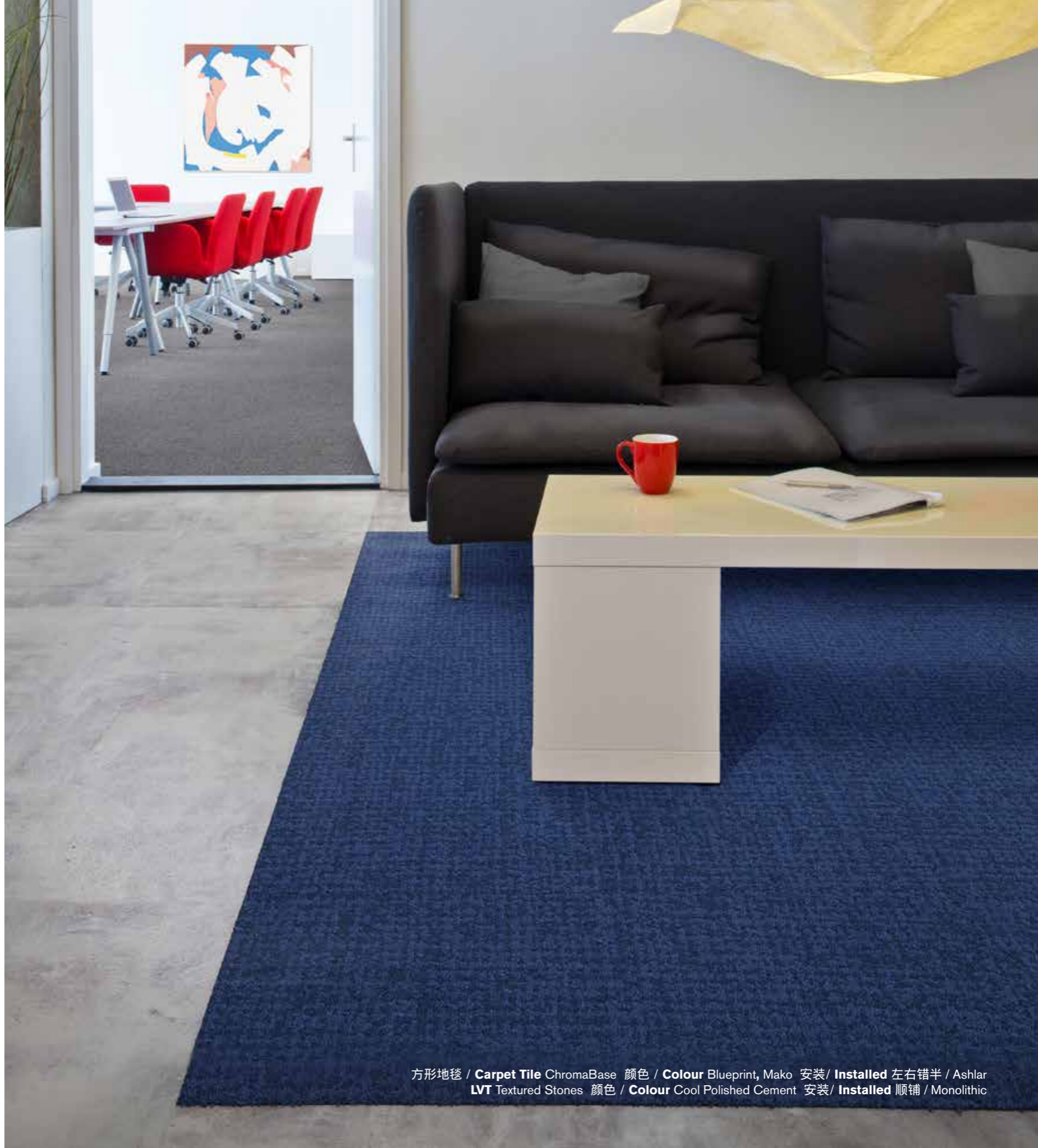
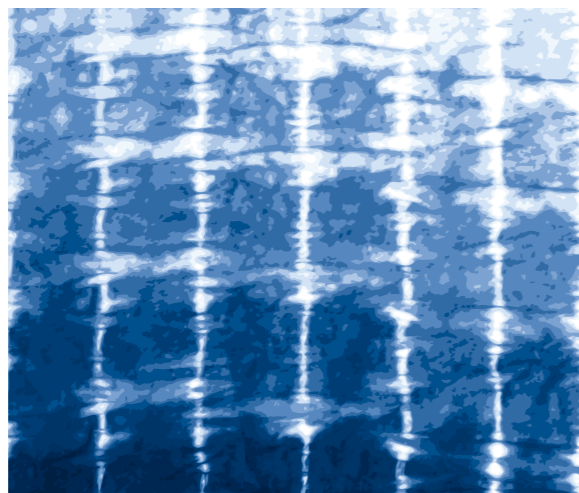
方形地毯 / **Carpet Tile** ChromaBase 颜色 / **Colour** Spice 安装 / **Installed** 顺铺 / Monolithic
LVT Studio Set 颜色 / **Colour** Espresso 安装 / **Installed** 左右错半 / Ashlar





方形地毯 / **Carpet Tile** ChromaBase 颜色 / **Colour** Charcoal, Lime, Cherry 安装 / **Installed** 左右错半 / Ashlar
条形地毯 / **Carpet Plank** ChromaBase 颜色 / **Colour** Spice 安装 / **Installed** 设计铺装 / Design By Tile





方形地毯 / Carpet Tile ChromaBase 颜色 / Colour Blueprint, Mako 安装 / Installed 左右错半 / Ashlar
LVT Textured Stones 颜色 / Colour Cool Polished Cement 安装 / Installed 顺铺 / Monolithic

Dots

通过ChromaDots 1 的灵动交错在基底周围营造出色彩的飘逸感。

再通过ChromaDots 2 注入激情的明亮色调，彰显色彩的热烈、融合，焕发新生。

Create tonal drift alongside the base by using the sparse organic movement of ChromaDots 1. Further inject a spirited acceleration of tone with ChromaDots 2, allowing colours to drift and merge, bringing them to life.

晕染
splash

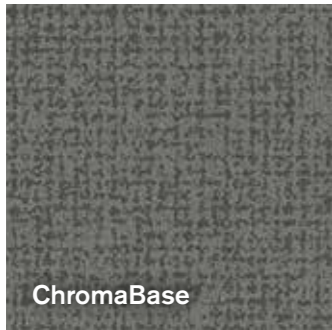
ChromaBase

点翠
sprinkle

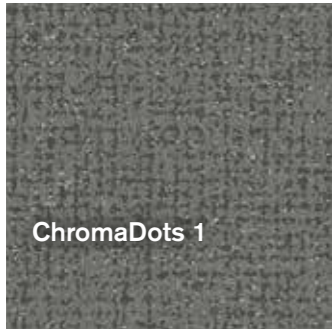
ChromaDots 1

泼洒
spray

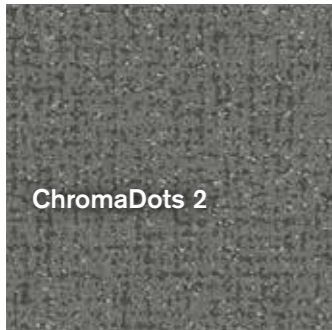
ChromaDots 2



ChromaBase



ChromaDots 1



ChromaDots 2

灵动交错，焕发新生

ChromaFlex系列着眼于大局，全面考虑与周围环境和用户之间的互动。该系列为您提供灵动的框架，一次安装过程就可以运用三种不同风格。

ChromaFlex色系崇尚体验性，集成了12种DOTS 1和12种DOTS 2，与24块BASE地毯融合过渡。

由BASE图案打底，通过各种灵动、中性的模块地毯彰显出色调飘逸感。

DOTS 1采用疏落有致、有机的设计风格，造就了丰富、实在的图形，轻松过渡到自由流动の様式。

DOTS 2采用了富有激情、动感十足的亮色调，实现了更为稳健、丰满的色彩过渡。

玩转色彩，体味色彩的飘逸感和融合度。刺激运动，为生命注入各种色彩。

ChromaFlex is designed to look at the bigger picture, how it's going to interact within the environment and with the people that use it. A flexible framework that enables you to install three diverse styles with one process.

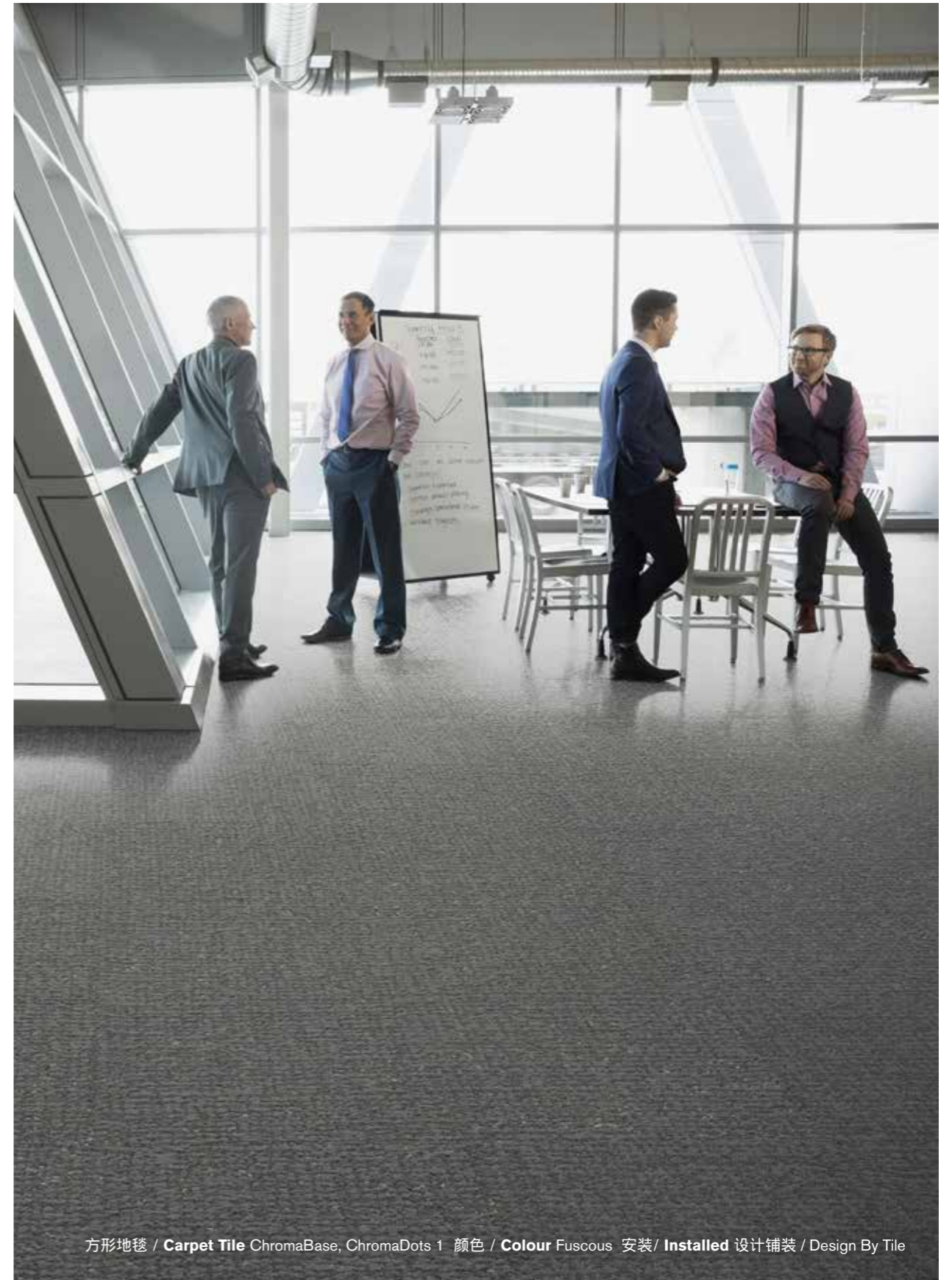
The ChromaFlex colour palette encourages experimentation, integrating 24 BASE tiles with 12 from DOTS 1 and 12 from DOTS 2.

Tonal drift emerges from the strong foundations of the BASE pattern, a diverse array of vibrant and neutral block tones.

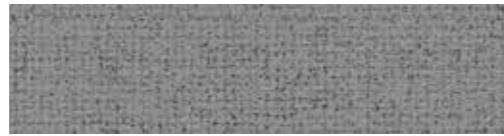
The introduction of DOTS 1, a sparse, organic design, encourages these rich, solid shapes to smoothly transition into free-flowing forms.

DOTS 2, a spirited and energetic acceleration of tone, enables the design to transition smoothly into more robust, full colour formations.

A chance to be more playful with colour, allowing colours to drift and merge. To stimulate movement and bringing colours to life.







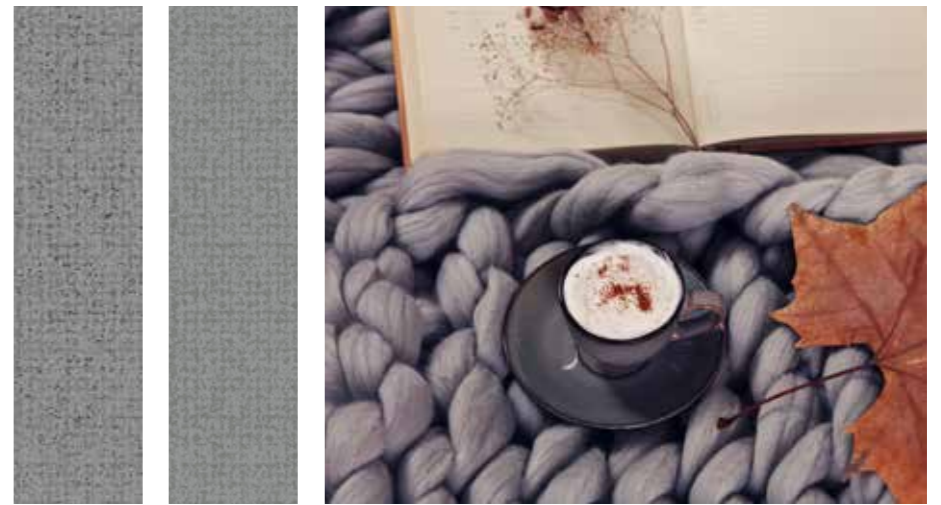
方形地毯 / **Carpet Tile** ChromaBase 条形地毯 / **Carpet Plank** ChromaDots 2 颜色 / **Colour** Slate 安装 / **Installed** 左右错半 / Ashlar
方形地毯 / **Carpet Tile** Step This Way 颜色 / **Colour** Ash 安装 / **Installed** 顺铺 / Monolithic



条形地毯 / **Carpet Plank** ChromaBase, ChromaDots 1, ChromaDots 2 颜色 / **Colour** Black 安装 / **Installed** 左右错半 / Ashlar
条形地毯 / **Carpet Plank** ChromaBase 颜色 / **Colour** Fire Engine 安装 / **Installed** 左右错半 / Ashlar



条形地毯 / Carpet Plank ChromaBase, ChromaDots 1 颜色 / Colour Slate 安装 / Installed 左右错半 / Ashlar
条形地毯 / Carpet Plank Merged Hues 颜色 / Colour Reef 安装 / Installed 设计铺装 / Design By Tile



ChromaFlex 中性色，方形地毯及长条地毯 / ChromaFlex Neutrals, squares and planks

ChromaBase



ChromaDots 1和ChromaDots 2 / ChromaDots 1 and ChromaDots 2



方块地毯 = 50厘米x 50厘米 / Squares = 50cm x 50cm
 长条地毯 = 25厘米 x 100厘米 / Planks = 25cm x 100cm

ChromaFlex 跳跃色，方块地毯和长条地毯 / ChromaFlex Brights, squares and planks

ChromaBase



ChromaDots 1和ChromaDots 2 / ChromaDots 1 and ChromaDots 2



方块地毯 = 50厘米x 50厘米 / Squares = 50cm x 50cm
 长条地毯 = 25厘米 x 100厘米 / Planks = 25cm x 100cm

技术参数 / Specifications

ChromaBase

产品型号	2468
产品结构	高低圈绒
纱线系统	100%原液染色纱线
簇绒机器规格	Tapestry
毯毛厚度	3.0毫米 +/- 0.5毫米
总厚度	7.0毫米 +/- 0.5毫米
地毯尺寸	50x50厘米, 25x100厘米
使用范围	常规商业
抗菌类型	Intersept®
抗污类型	Protekt2®
安装方法	50x50厘米 左右错半、顺铺
安装方法	25x100厘米 左右错半



左右错半 顺铺



左右错半

ChromaDots 1

产品型号	2469
产品结构	高低圈绒
纱线系统	100%原液染色纱线
簇绒机器规格	Tapestry
毯毛厚度	3.0毫米 +/- 0.5毫米
总厚度	7.0毫米 +/- 0.5毫米
地毯尺寸	50x50厘米, 25x100厘米
使用范围	常规商业
抗菌类型	Intersept®
抗污类型	Protekt2®
安装方法	50x50厘米 左右错半
安装方法	25x100厘米 左右错半



左右错半



左右错半

ChromaDots 2

产品型号	2470
产品结构	高低圈绒
纱线系统	100%原液染色纱线
簇绒机器规格	Tapestry
毯毛厚度	3.0毫米 +/- 0.5毫米
总厚度	7.0毫米 +/- 0.5毫米
地毯尺寸	50x50厘米, 25x100厘米
使用范围	常规商业
抗菌类型	Intersept®
抗污类型	Protekt2®
安装方法	50x50厘米 左右错半
安装方法	25x100厘米 左右错半



左右错半



左右错半

ChromaBase

Style Code	2468
Product Construction	Tufted Textured Loop
Yarn System	100% Solution Dyed Nylon
Machine Gauge	Tapestry
Pile Thickness	3.0mm +/- 0.5mm
Total Thickness	7.0mm +/- 0.5mm
Tile Size	50x50cm, 25x100cm
Area of Use	Commercial – General Use
Lifetime Antimicrobial	Intersept®
Soil/Stain Protection	Protekt2®
Installation Methods	Ashlar, Monolithic
Installation Methods	25x100cm Ashlar



ASHLAR

MONOLITHIC



ASHLAR

ChromaDots 1

Style Code	2469
Product Construction	Tufted Textured Loop
Yarn System	100% Solution Dyed Nylon
Machine Gauge	Tapestry
Pile Thickness	3.0mm +/- 0.5mm
Total Thickness	7.0mm +/- 0.5mm
Tile Size	50x50cm, 25x100cm
Area of Use	Commercial – General Use
Lifetime Antimicrobial	Intersept®
Soil/Stain Protection	Protekt2®
Installation Methods	Ashlar
Installation Methods	25x100cm Ashlar



ASHLAR



ASHLAR

ChromaDots 2

Style Code	2470
Product Construction	Tufted Textured Loop
Yarn System	100% Solution Dyed Nylon
Machine Gauge	Tapestry
Pile Thickness	3.0mm +/- 0.5mm
Total Thickness	7.0mm +/- 0.5mm
Tile Siz	50x50cm, 25x100cm
Area of Use	Commercial – General Use
Lifetime Antimicrobial	Intersept®
Soil/Stain Protection	Protekt2®
Installation Methods	Ashlar
Installation Methods	25x100cm Ashlar



ASHLAR



ASHLAR



Carbon Neutral Floors™
All of our products are carbon neutral and our programme is verified by an independent third party, Bureau Veritas.



英特飞在亚太地区的所有生产设施都经过 ISO 9001 质量管理体系和 ISO 14001 环境管理体系的认证。
All Interface manufacturing facilities in the Asia Pacific region maintain registration to ISO 9001 Quality Management Systems and ISO 14001 Environmental Management Systems.

产品规格可能会受到实际生产公差的影响，且可能会随时更新，恕不另行通知。不同生产批次的少许偏差实属正常，应纳入整体安装规划的考虑范围。产品质保以生产商提供的书面质保文件为准。免责声明：所有其他保证，包括但不限于有关适用于特定用途、适销性或适用性的默示保证，本公司概不负责。敬请联系您的销售代表，获得书面质保文件。
Production specifications are subject to normal manufacturing tolerances and may be changed without notice. Slight variation in colour among different production lots are normal and should be considered in the overall installation plan. Products covered by manufacturer's written warranty only. All other warranties, including without limitation any implied warranties of merchantability or fitness for particular purpose, are hereby disclaimed. Contact your representative for written warranty information.

www.interface.com.cn

上海工作室 / Shanghai Studio

英特飞中国 / Interface China
电话 / Tel: 86-21-6340 3868
www.interface.com.cn

香港工作室 / Hongkong Studio

英特飞中国 / Interface China
电话 / Tel: 852-2802 0838
www.interface.com.cn

北京工作室 / Beijing Studio

英特飞中国 / Interface China
电话 / Tel: 86-10-6590 7812
www.interface.com.cn

太仓生产基地 / Taicang Plant

英特飞中国 / Interface China
电话 / Tel: 86-512- 5373 9888
www.interface.com.cn

广州工作室 / Guangzhou Studio

英特飞中国 / Interface China
电话 / Tel: 86-139 2645 4400
www.interface.com.cn

东南亚 / South East Asia

英特飞亚洲 / Interface Asia
电话 / Tel: 65-6478 1510
www.interface.com

韩国 / South Korea

电话 / Tel: 82-2-555 1734
www.interface.com

日本 / Japan

英特飞日本 / Interface Japan
电话 / Tel: 81-3-5733 5211
www.interface.com

澳大利亚 / Australia

英特飞澳大利亚 / Interface Australia
本地免费电话 / Local toll free: 1800 804 361
www.interface.com.au

印度 / India

英特飞印度 / Interface India
电话 / Tel: 91-80-4613 1313

04/2020
SF0123T0



气候变化无可争辩。但我们可以扭转这种局面。我们的任务是落实行动。加入#气候回归计划，助力营造宜居气候。

Climate change is undeniable. And reversible. Our mission is to prove it. **Join the #ClimateTakeBack and help create a climate fit for life.**